

Cyma1000 PVD at BEMS 2008

Anthony Fleming, PhD, Elizabeth Bauer, RN, Marie Dahle and John Enge

Before



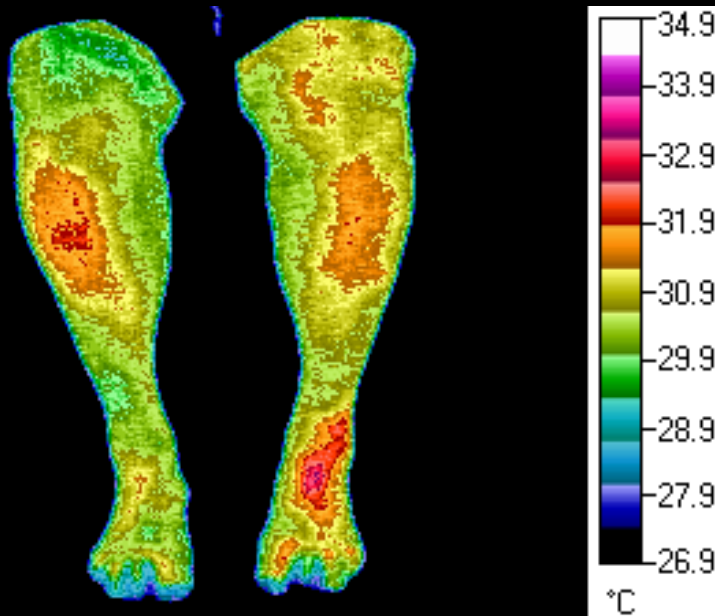
After 15 Minutes



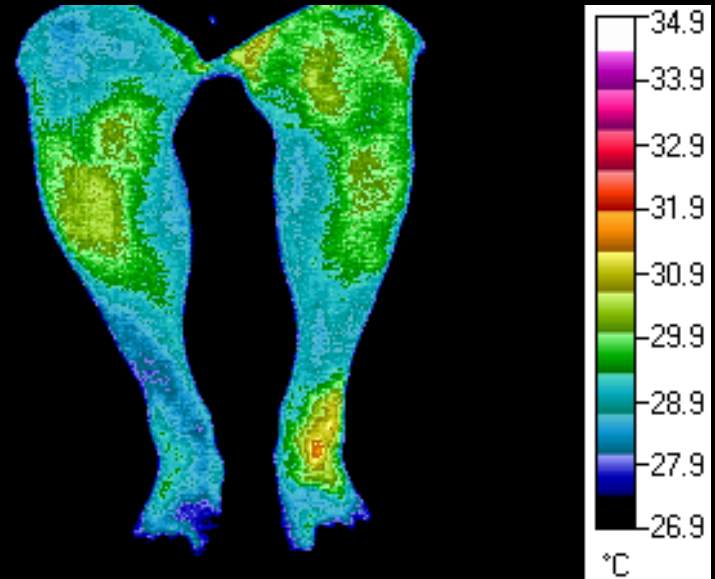
AMI750

TD 06.26.10

Before

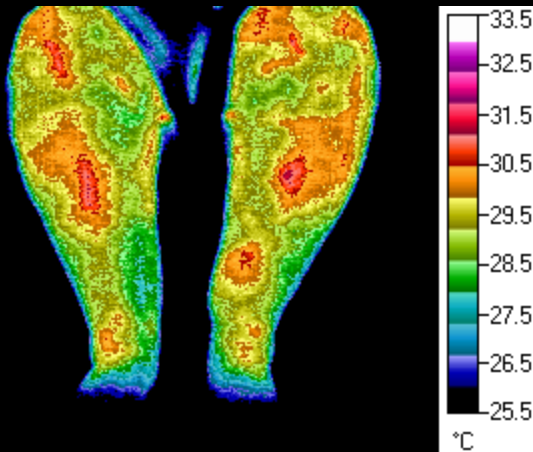


After - 20 minutes

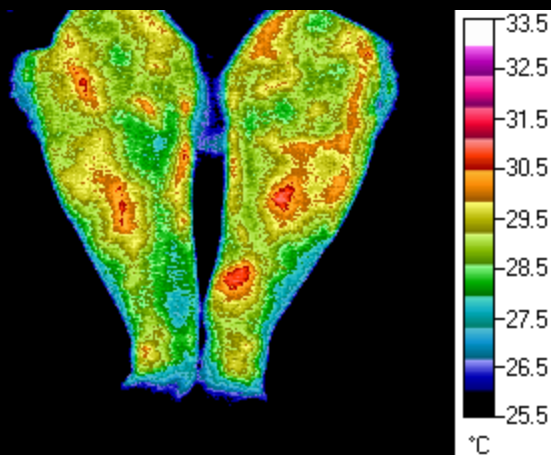
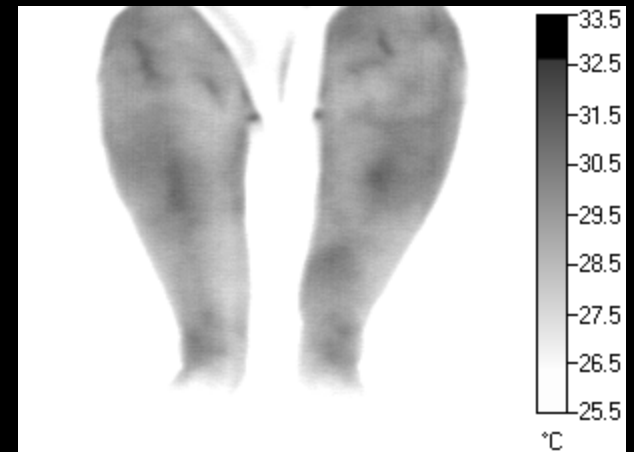


AMI750

HL 06.24.10



Before



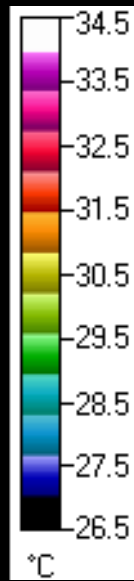
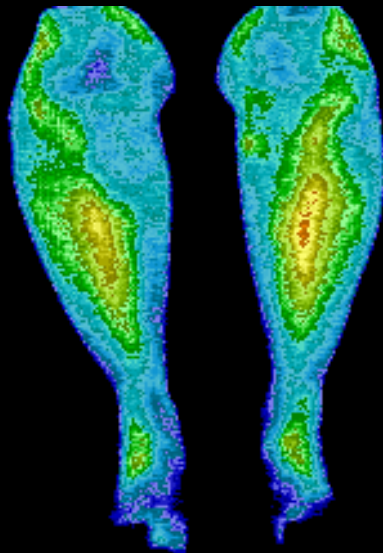
**After
20 Minutes**



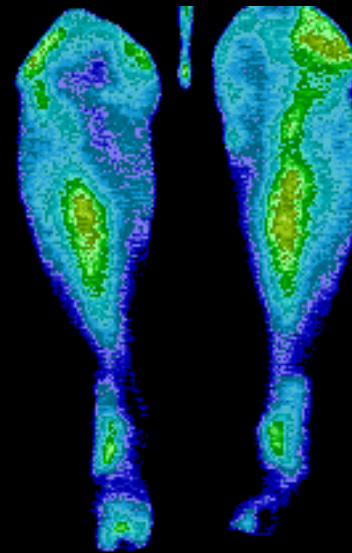
AMI750

EN 06.26.10

Before



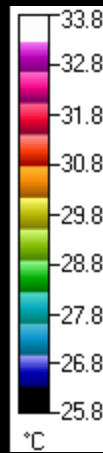
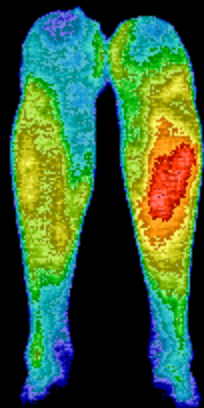
After - 20 minutes



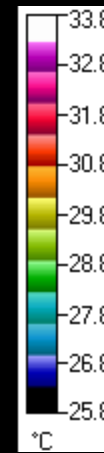
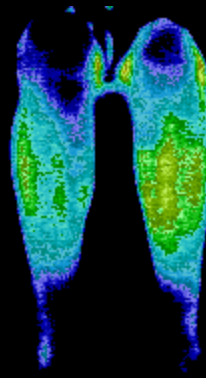
AMI750

MC 07.13.10

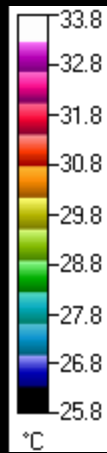
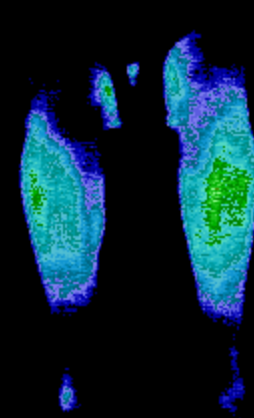
Before



20 Minutes



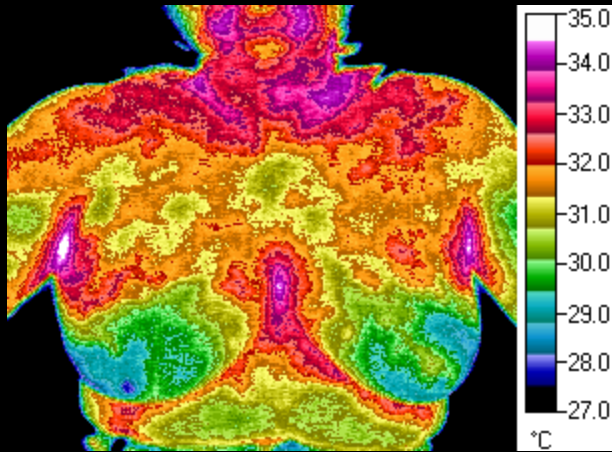
25 Hours Post



AMI750

JM 07.17.10

Before



20 Minutes via Feet

