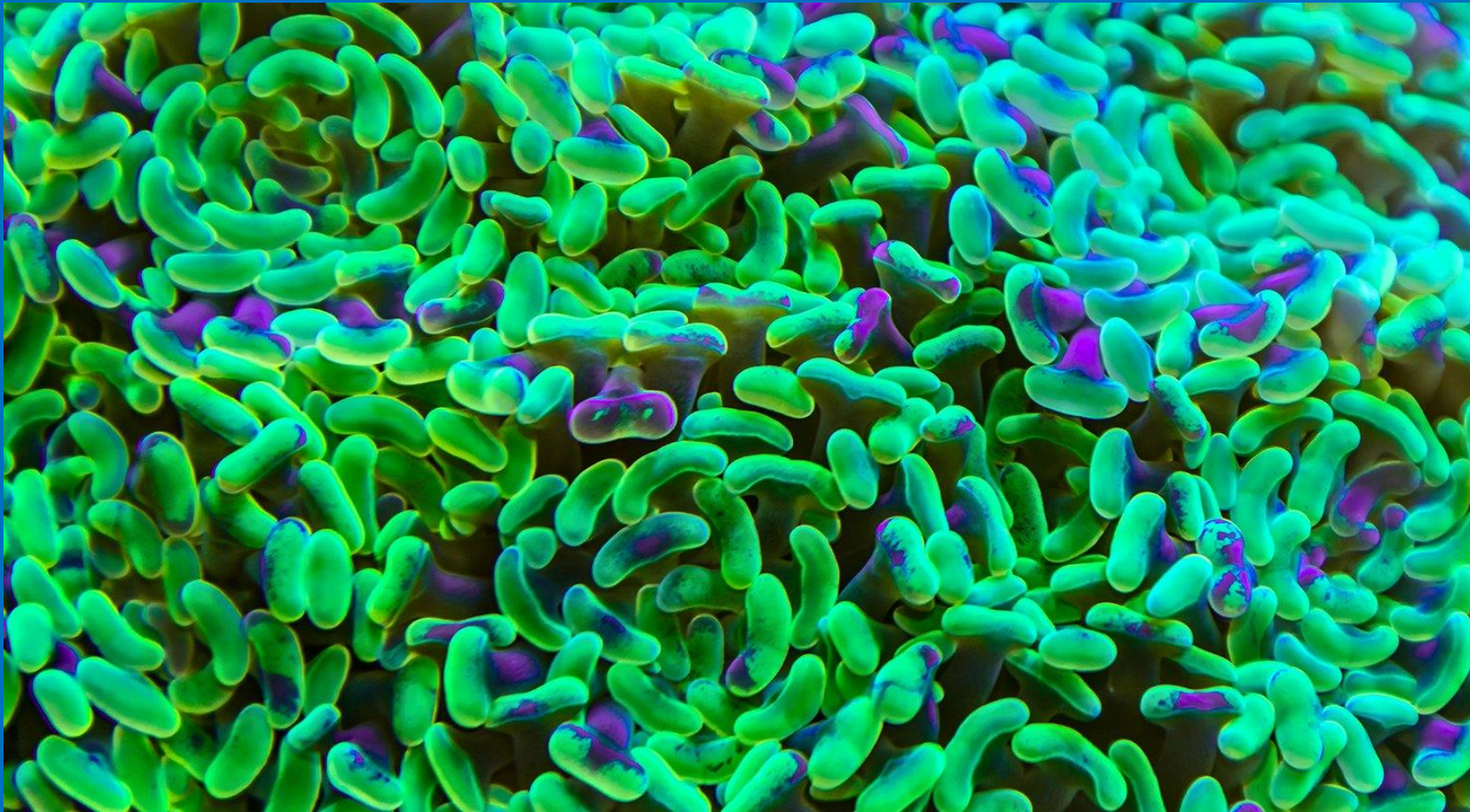


PAIN AND INFLAMMATION IN THE ORAL CAVITY

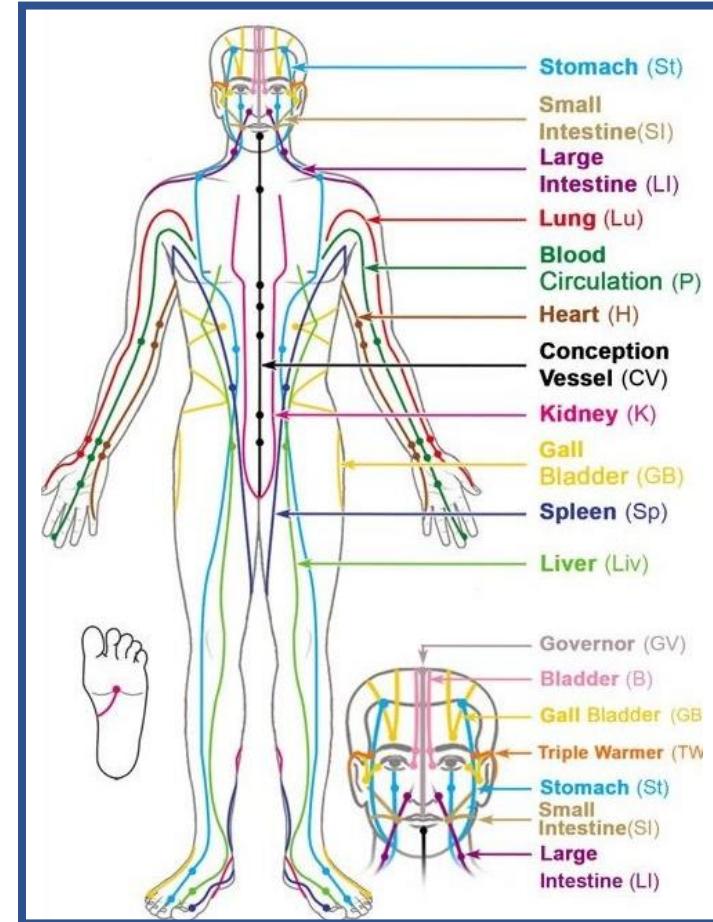
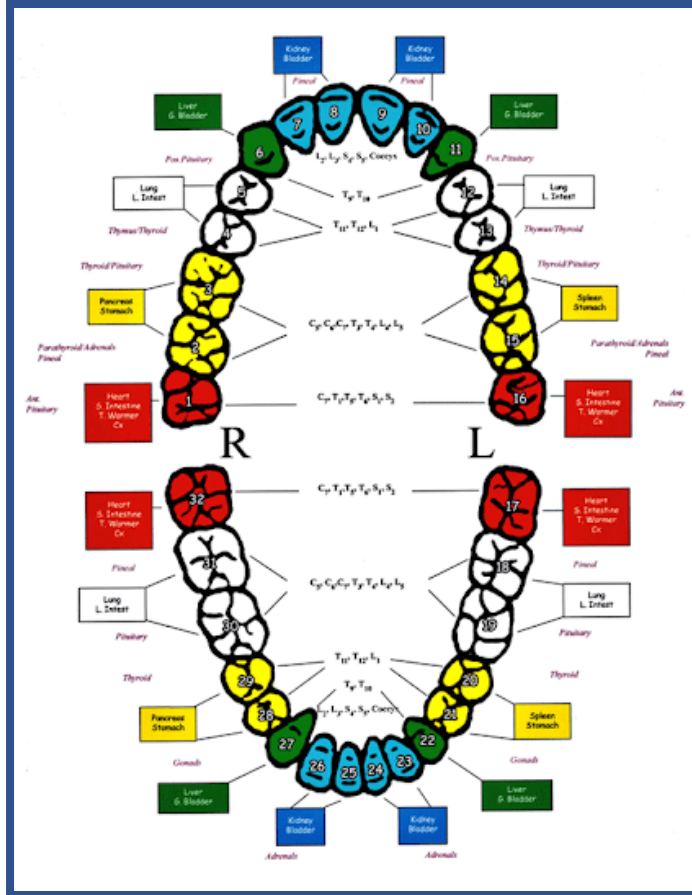
A preliminary investigation
using non-invasive, audible sound frequencies.

Many researchers today are discovering how our oral health greatly affects our health in general.



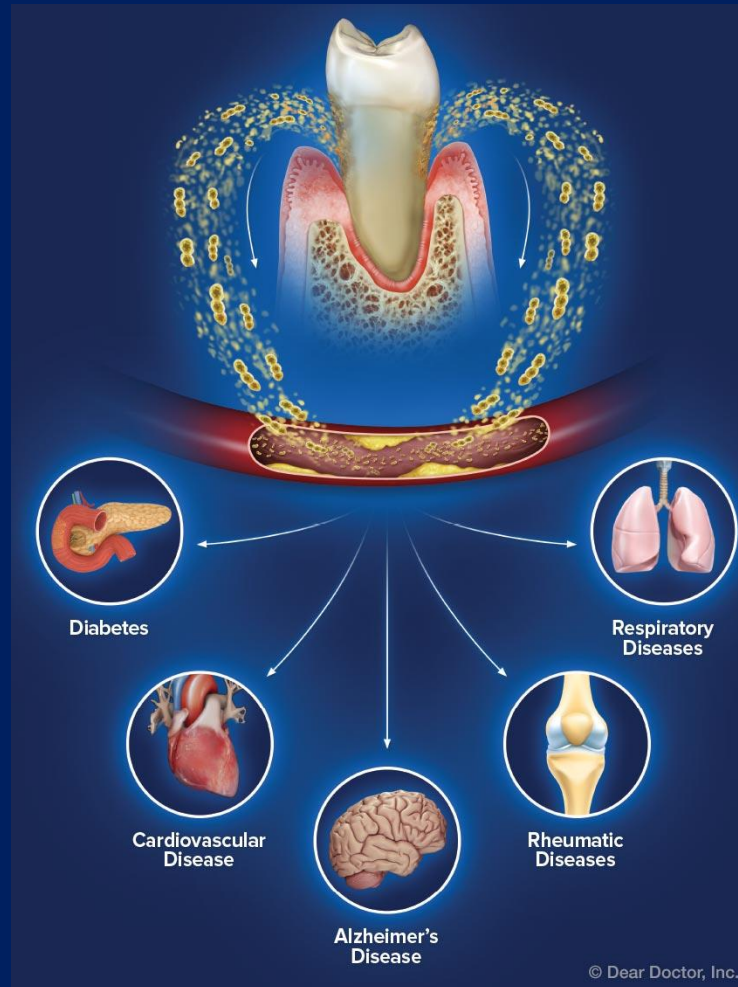
Oral biome

Actually, this is not new information...



Centuries ago, doctors of Chinese medicine discovered that there was an indisputable link between the health of the teeth and the function of the organs.

Scientists are now discovering the importance of the oral biome
and how any disturbance there
(such as an overgrowth of bacteria or the introduction of other pathogens)



can be related in other major systems in the body.

In the ongoing research at Cyma Technologies, we are always finding new applications for the use of therapeutic sound--one of the latest is its amazing impact on dental health.



The AMI 750 device was used for this preliminary investigation. This application method is designed to work by transmitting specific frequencies along the meridian pathways of the body.

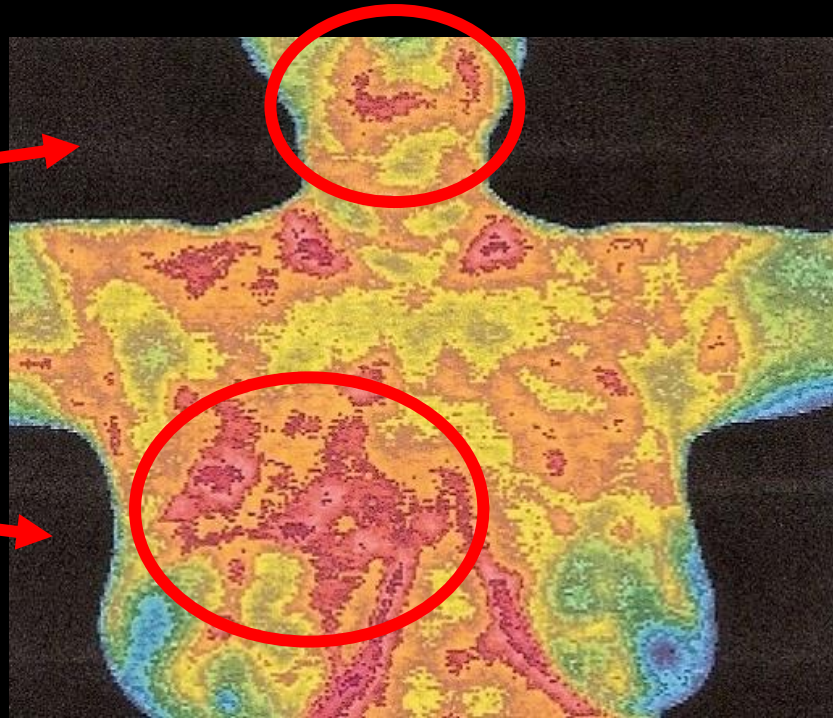


Based on the principles of Chinese medicine, this is an ideal way for healthy communication between the teeth and the organs.

The following thermal images will help establish how this method of applying specific sound frequencies through the feet with the **AMI 750™** may increase the potential for **managing chronic pain and inflammation and positively affecting dental health.**

Addressing Pain and Inflammation with the AMI 750

Before



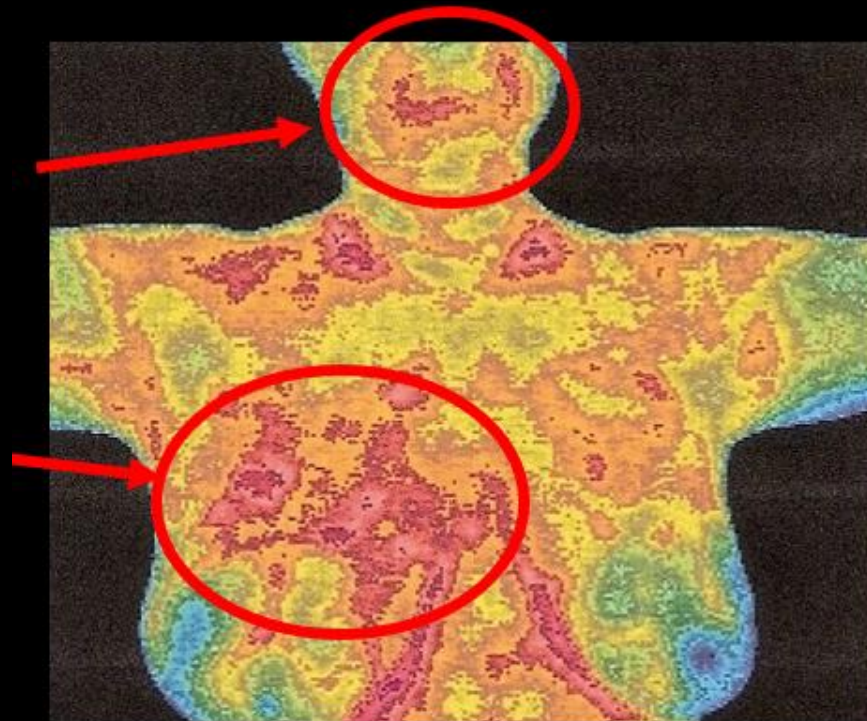
After 6 Week Protocol



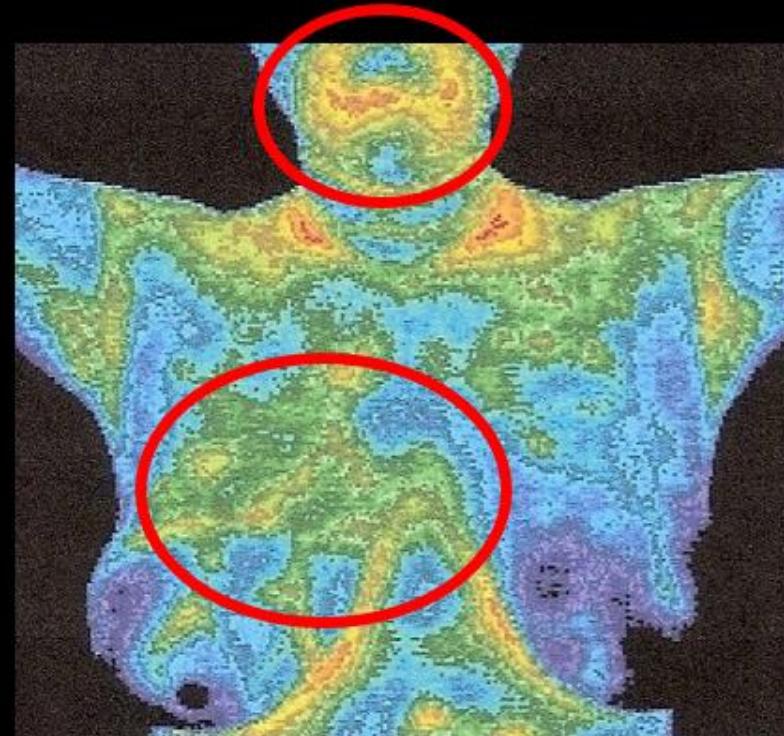
RED = inflammation

The evidence of the efficacy of using the AMI 750 in a six-week protocol for reducing chronic inflammation is shown in these images.

Before



After 6 Week Protocol



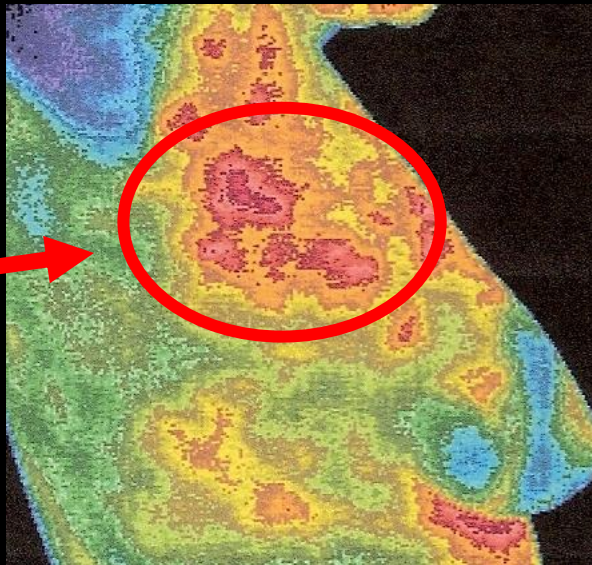
RED = inflammation

ADDRESSING PAIN & INFLAMMATION with AMI 750 application via feet.

Before

After 6 Week Protocol

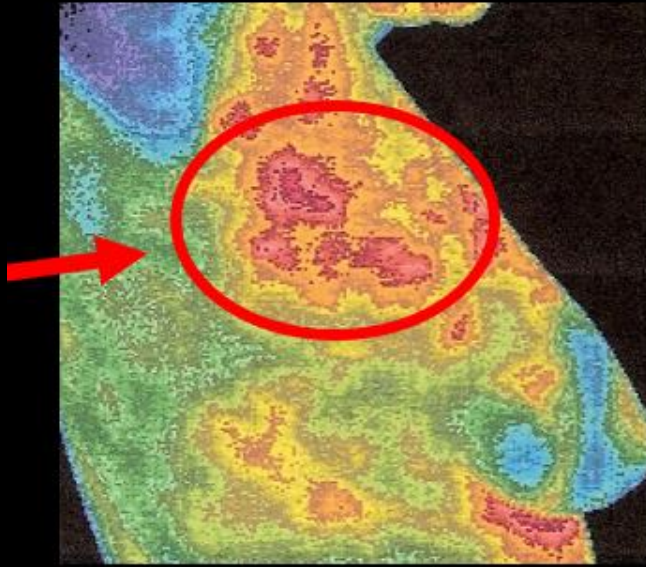
Lateral view:
Lymph
congestion
and
inflammation



RED = inflammation

The lymph system is relieved of congestion and we are able to see the inflammation dissipating.

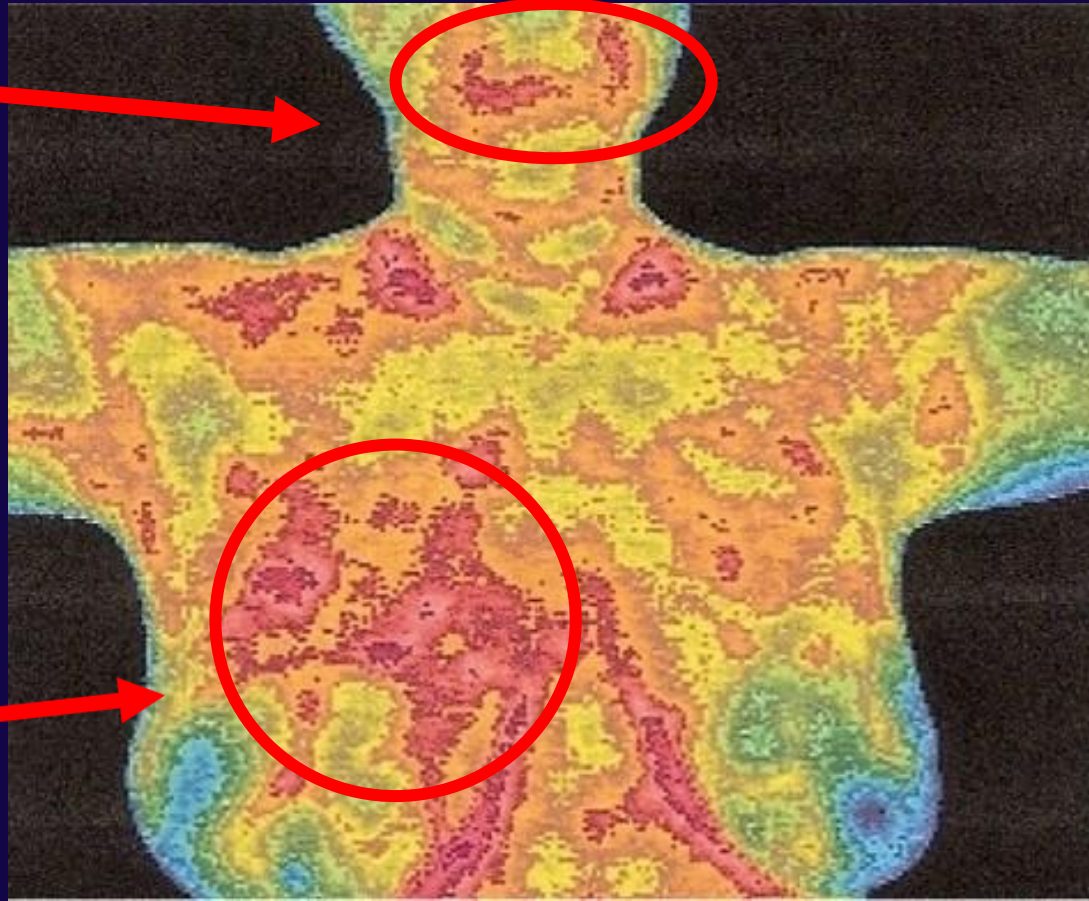
Before



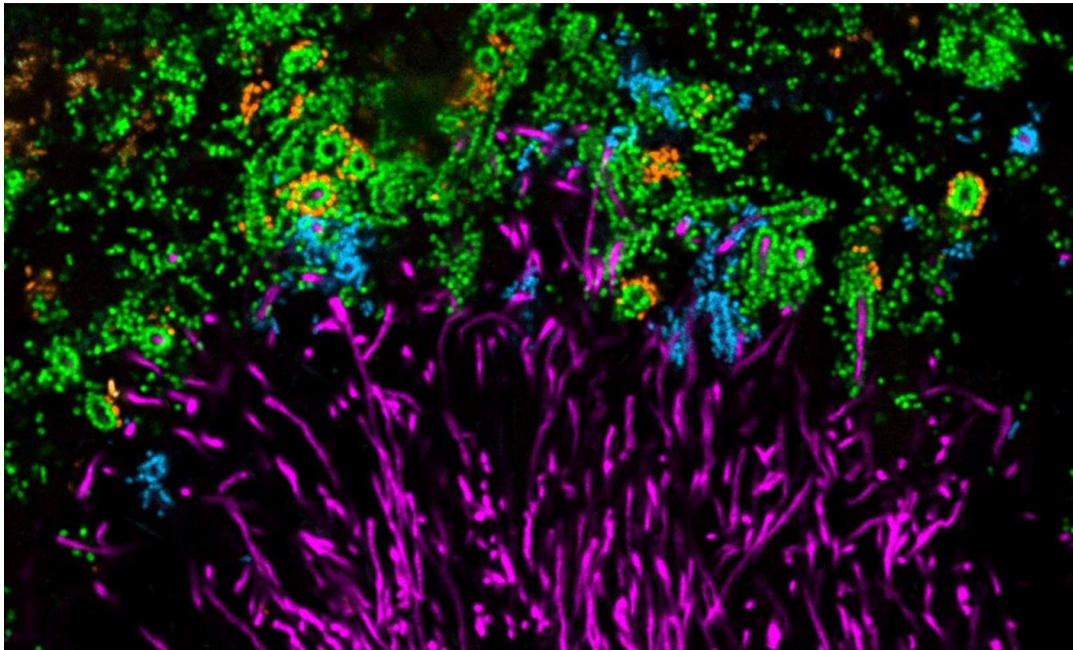
After 6 Week Protocol



**DENTAL INFECTIONS
HAVE BEEN KNOWN
TO CAUSE
INFLAMMATION
IN OTHER PARTS OF
THE BODY**

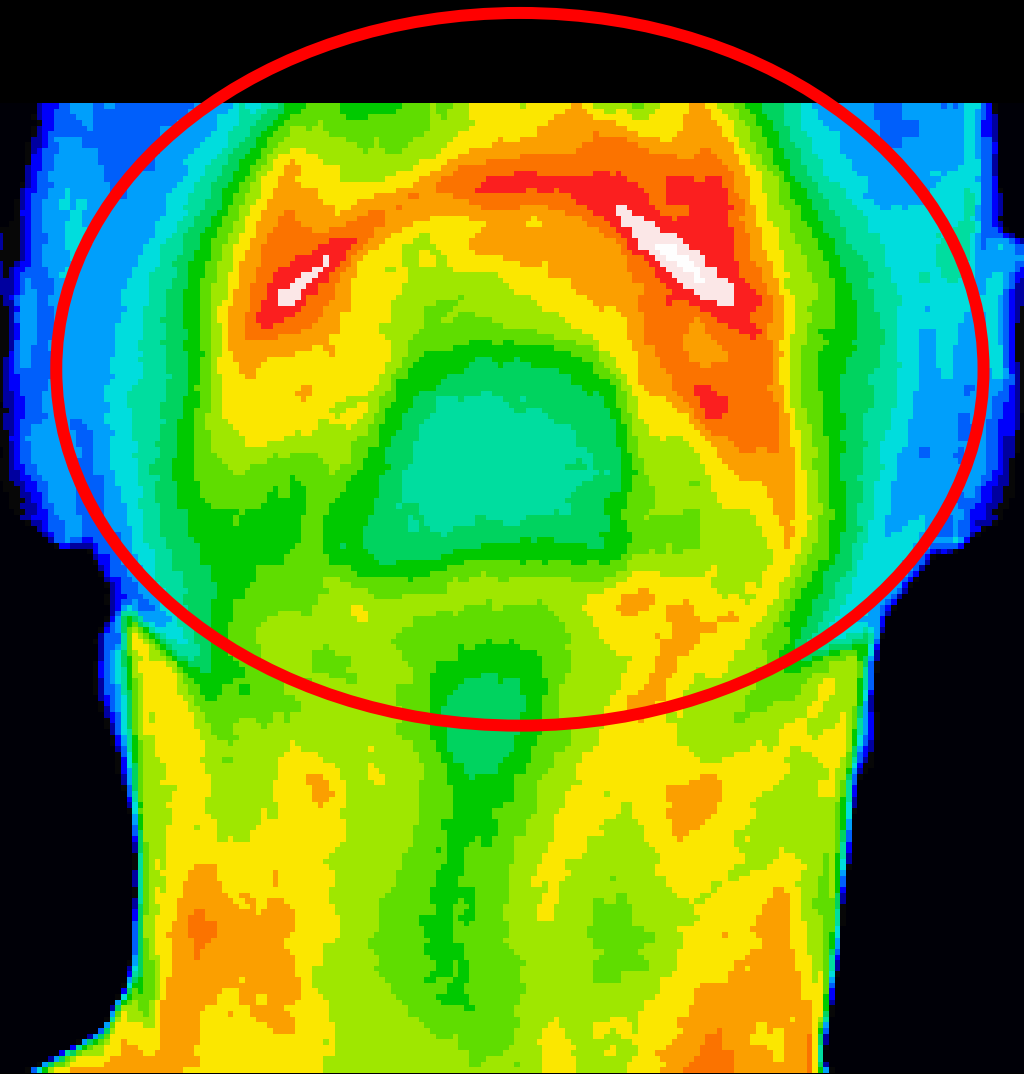


If there is a disturbance in the **oral biome**, such as an **overgrowth of bacteria** or the introduction of other pathogens this can be reflected **as inflammation or infection in other major systems in the body.**



Oral biome structure





In this image we see a female with a history of regular dental visits and what most would consider to be “good oral care.”

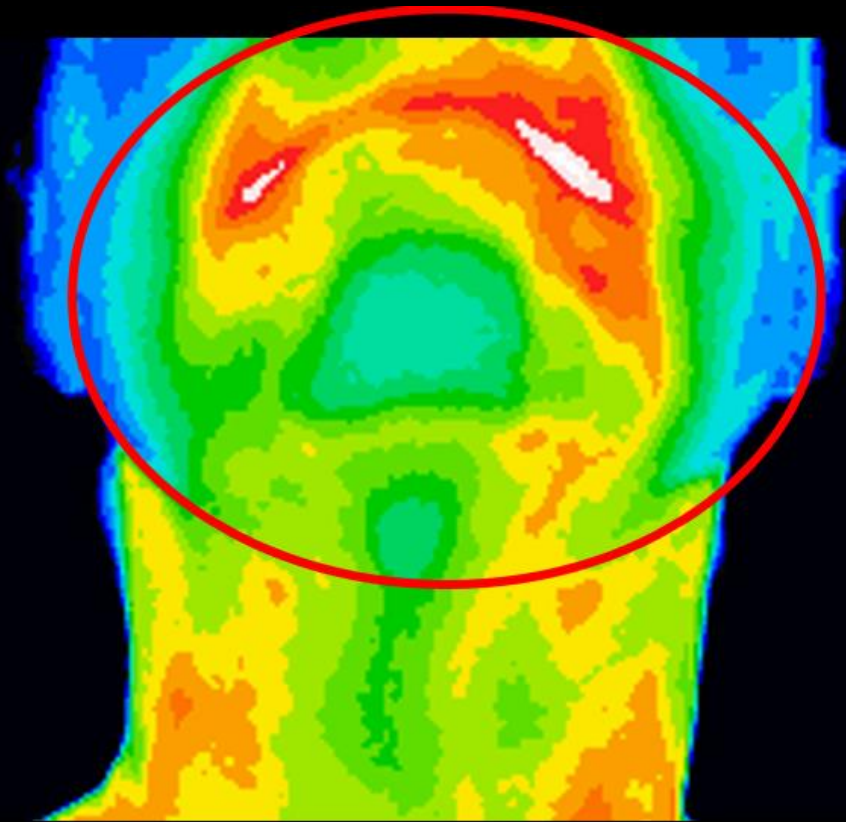
Baseline image

RED = inflammation

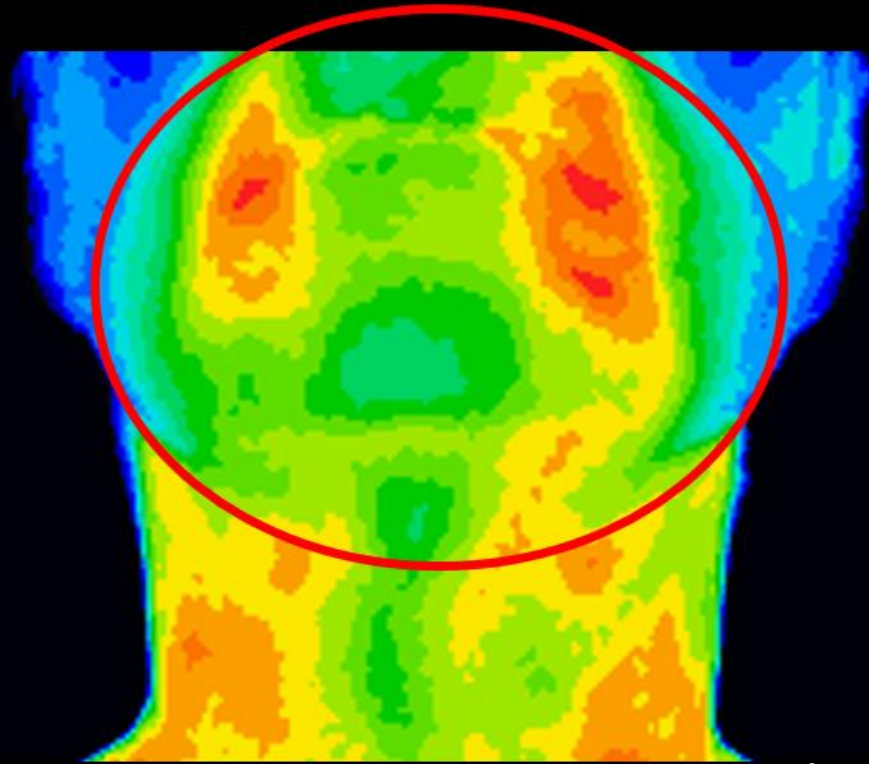
Female with history of regular dental visits and good oral care.

No symptomology

www.CymaTechnologies.com



Baseline Image



After 30 minutes Image

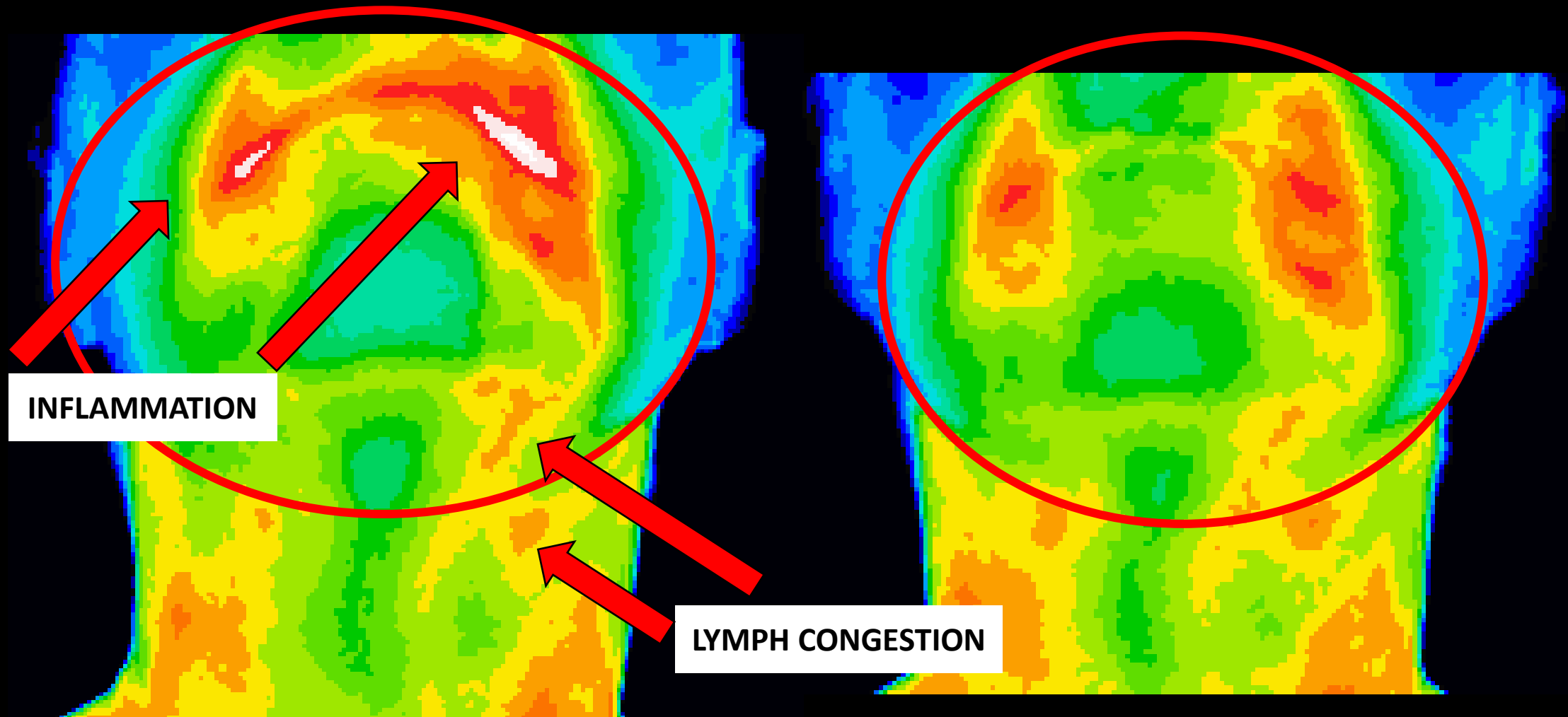
To the left, the white indicates “very hot and inflamed tissue” in the area of two crowns. Extending down the side of her neck, we see inflammation in the lymph system.

On the right, after just 30 minutes on the AMI 750 we see the diminishing inflammatory process and the lymph system draining more effectively.

BEFORE

AFTER 30 MINUTE SESSION

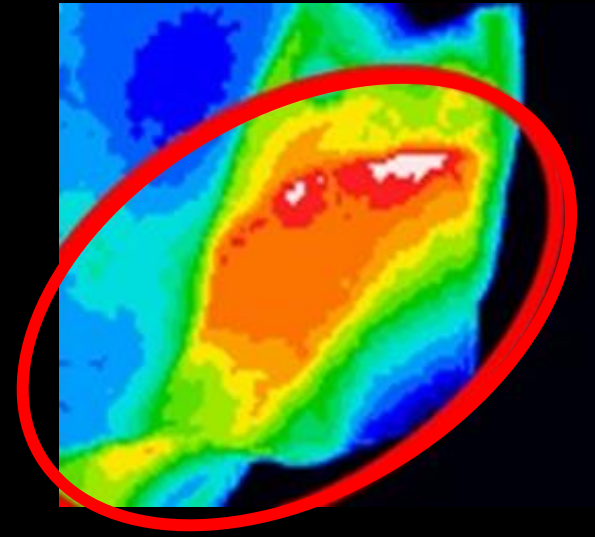
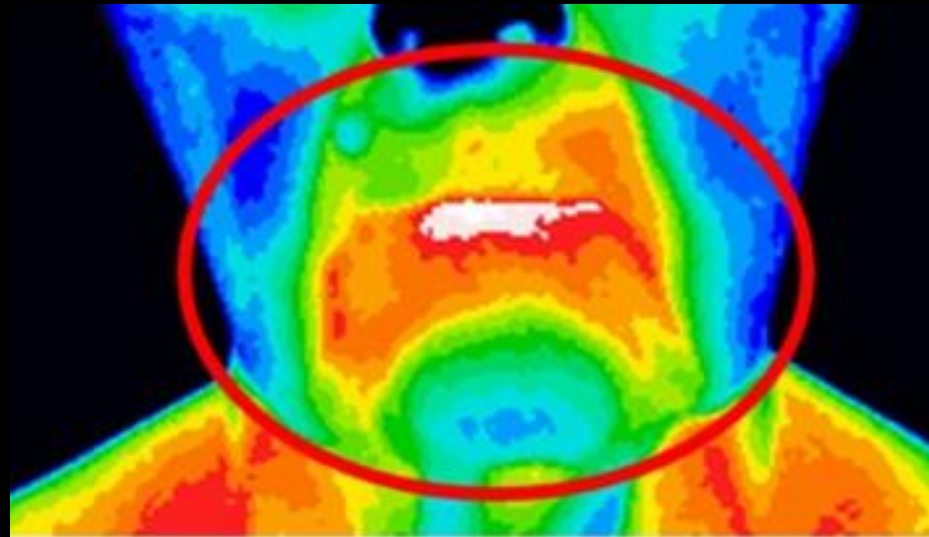
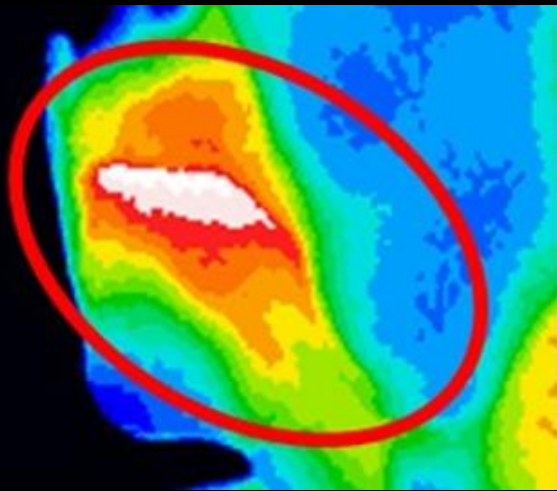
AMI 750 APPLIED VIA FEET



Female with history of regular dental visits and good oral care.
No symptomology

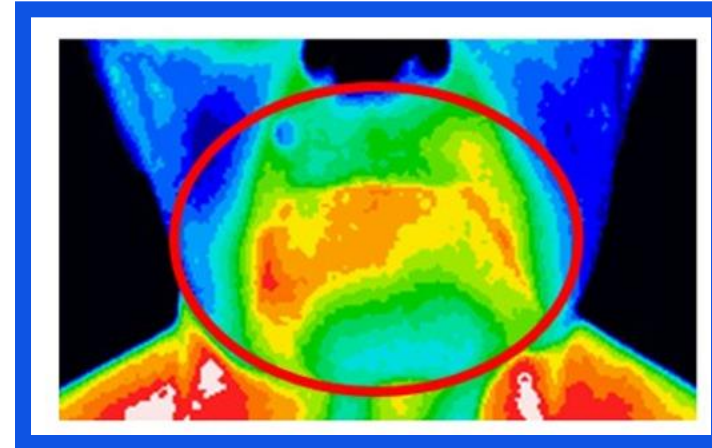
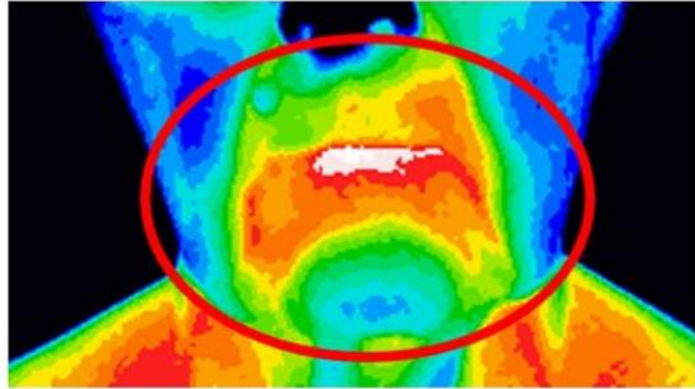
www.CymaTechnologies.com

A dentist diagnosed this patient with periodontal disease. In these thermal image views we can see the evidence of inflammation related to the diagnosis.

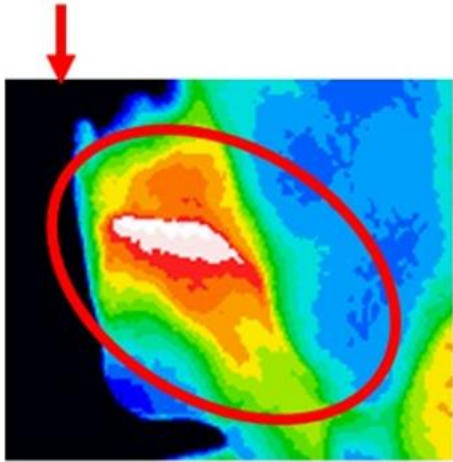


WHITE and RED = inflammation

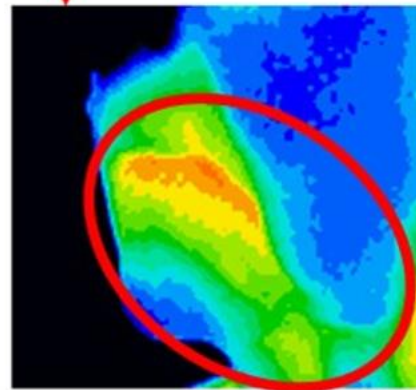
Here is the impact of therapeutic sound on a chronic inflammatory process with the AMI 750™ in just 30 minutes.



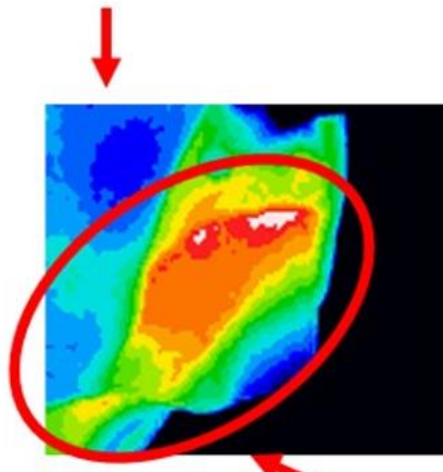
BEFORE



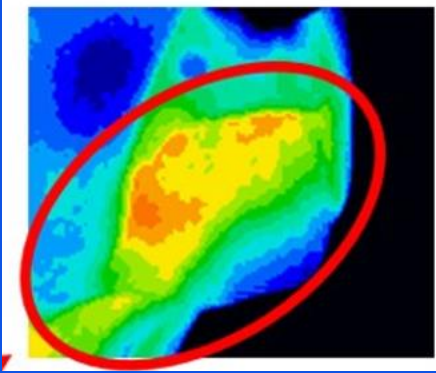
AFTER 30 MIN SESSION
AMI 750 VIA FEET



BEFORE



AFTER 30 MIN SESSION
AMI 750 VIA FEET



Anterior, Left and Right Oblique Views

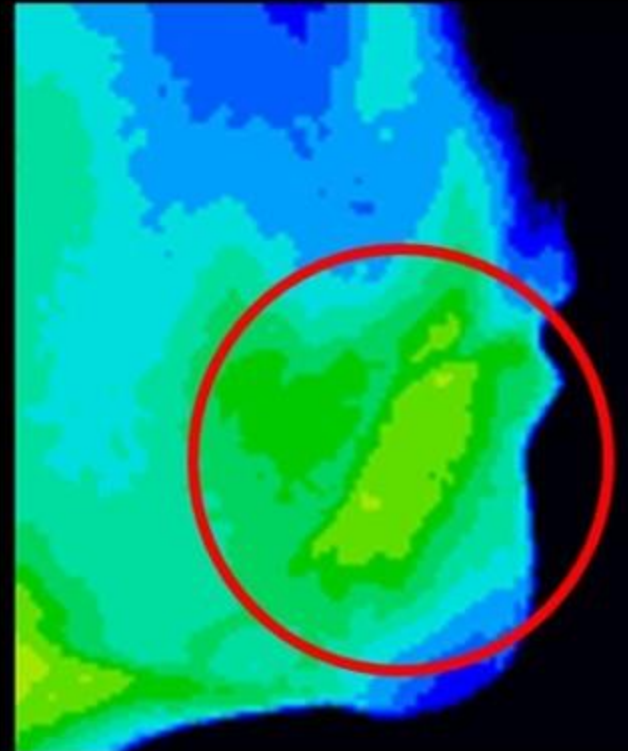
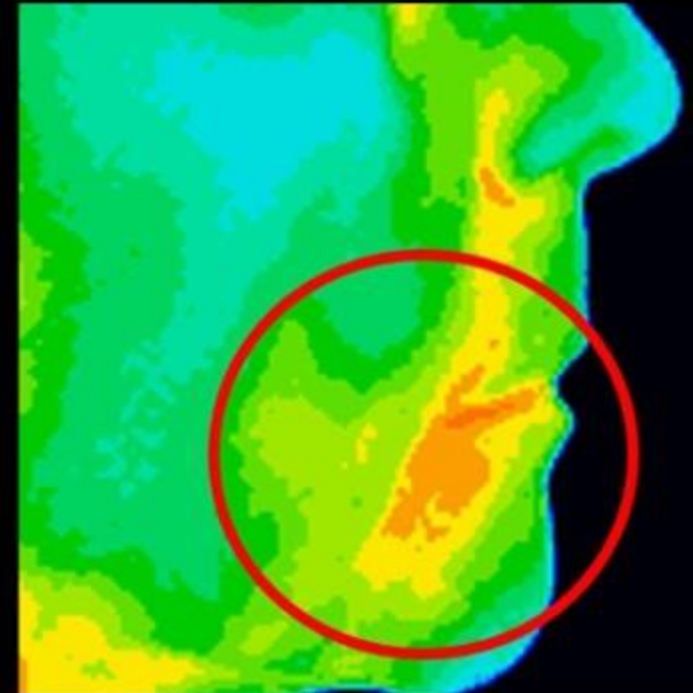
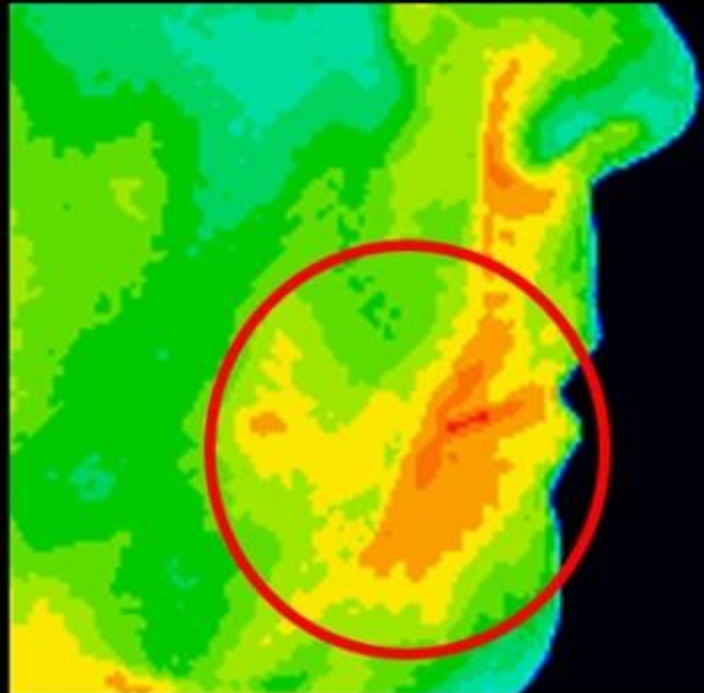
Note Lymph Drainage

BEFORE

AFTER 30 MINUTES

**AFTER 6 WEEKS WITH
DAILY AMI 750 SESSIONS**

**WITH THE
AMI 750**



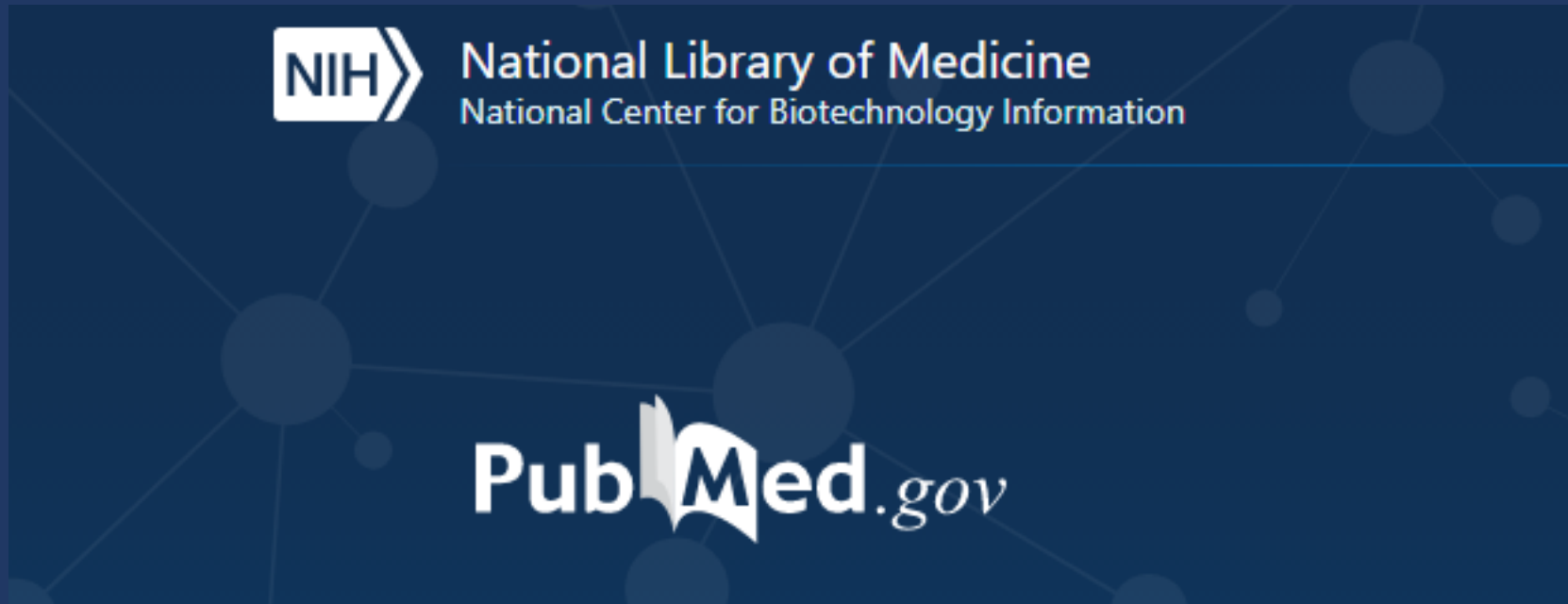
RED = HIGH TEMPERATURE / INFLAMMATION

GREEN = NEUTRAL

67 YEAR OLD FEMALE , INTERMITTENT PAIN

Currently, there are over 1800 published papers linking oral bacteria to disease.

At the top of the list are heart, Stroke, Cancer and Lung diseases.





Weston A. Price
1870-1948

“The most universal disease in the world is the decay of the teeth.”

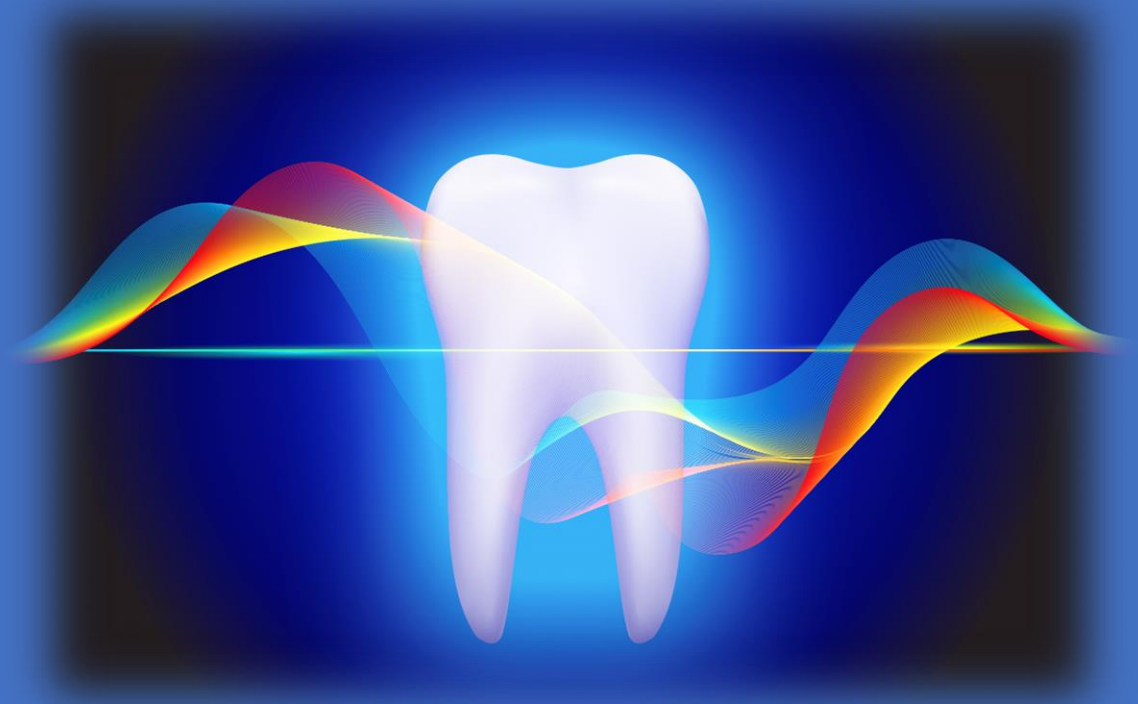
Dr. Weston A. Price, dentist and medical researcher

Through dissipating chronic inflammation, we can begin to address many of the problems that begin in the oral cavity.



While **Cymatherapy™** with the **AMI 750™** for Dental Health **does not** replace ongoing care from your dentist, it can help to address issues before they become even more serious problems or disease.

Preventive dental care and oral hygiene are important to overall health.
Contact your dental professional for regular care.
Harness the power of sound.



www.cymatechtechnologies.com